

# Welcome to

Welcome to **Quick View Plus for Windows 95**. If you have not already done so, please register to receive free technical support and discounts on future versions of *Quick View Plus*. You can fax or mail the enclosed form or, if you have a modem, you can register electronically. If you are using the trial version of *Quick View Plus* you will automatically be registered when you purchase the product electronically.

This document includes information on what's new in this version, contact information for Inso Corporation, last minute technical notes, and a list of the file formats that *Quick View Plus* supports. More technical information can be found in the text file TECHNOTE.TXT, the user's manual, and the Help system.

This document is only viewed when *Quick View Plus* is run for the first time. If you wish to view it at a later time, it is README.DOC in the directory where you installed *Quick View Plus*. This directory also contains sample files, all of which begin with the letters SMP.

## ➤ What's New

Quick View Plus release 3.0.3 includes Netscape Navigator 2.0 plug-in support for all Quick View Plus supported formats. Navigator uses plug-ins to view files in formats that it does not understand. Plug-ins are used when you click on a link to a file that isn't a normal web page, when a web page has a file embedded in it, and when you receive attachments in Netscape mail.

Individual users can use plug-ins as an alternative to setting up many different Helper Applications for file formats like ZIP, Microsoft Word, Tar, and all the other formats Quick View Plus supports.

Corporations can use plug-ins to publish non-HTML files on their corporate intranets. This saves Webmasters the time, money and headache of manually converting everything to HTML.

Technical notes and additional information on ways to use Quick View Plus's plug-ins are available in the document NETSCAPE.DOC.

## ➤ Contact Information

| <b>In North America</b>  |                     |
|--|---------------------|
| <b>Inso Corporation</b><br><b>401 North Wabash Suite 600</b><br><b>Chicago, Illinois 60611</b> |                     |
| Support  | 312-527-HELP        |
| General  | 312-329-0700        |
| Fax  | 312-670-0820        |
| World Wide Web site  | www.inso.com        |
| Support Email  | supportchi@inso.com |
| Sales Email  | saleschi@inso.com   |

| <b>In Europe</b>  |                   |
|---|-------------------|
| <b>Inso Corporation Ltd.</b><br><b>Woodcock House</b><br><b>Gibbard Mews, High Street</b><br><b>Wimbledon Village SW19 5BY</b><br><b>UK</b> |                   |
| Phone   | (44) 181 947 1122 |
| Fax   | (44) 181 947 1810 |
| Email   | europa.inso.com   |

## ➤ **Important Technical Notes**

### **Using Quick View Plus as a helper application for Internet browsers and tools**

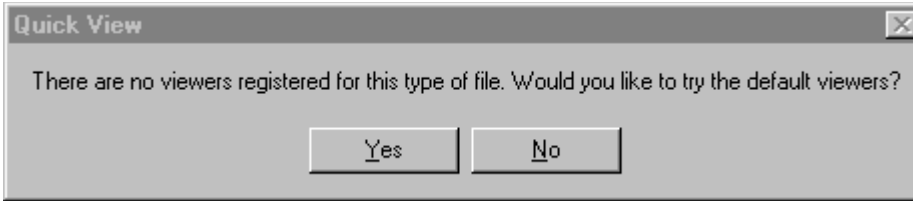
Quick View Plus finds and integrates itself with some of the most popular Internet World Wide Web browsers. However there are a number of other browsers and tools (like FTP clients and News Readers) that also have an option to setup a file viewer or viewers. To use Quick View Plus as your viewer with these applications, simply enter the full path to QVP32.EXE where the tool requests the name of the viewer application. If you installed Quick View Plus in the default location, this path will be

`C:\progra~1\quickv~1\programs\qvp32.exe`

Please note that unless your application is long file name aware you must enter the short version of the path, like the one above.

### **Installing Quick View after installing Quick View Plus.**

If you install the Windows 95 Quick View feature after installing Quick View Plus, two problems will appear. The first is that both "Quick View" and "Quick View Plus" will appear on the context menus of many files. The second is that using Quick View Plus on an attachment in Exchange will bring up a message box like the one below.



Clicking Yes brings up Quick View Plus. This message box is currently unavoidable because of the way Exchange and Windows 95 work together. To fix both these problems, reinstall Quick View Plus.

### **Drag and drop problems**

There are a number of places where dragging and dropping text or graphics from Quick View Plus does not work. These problems always come down to differences between the formats we can produce and the formats that the application being dropped on expects.

Examples of this include drag and drop of images (bitmaps or drawings) onto applications like Word and drag and drop of text into an Exchange mail message. In both these cases, the applications are not accepting the formats we provide, even though they accept the same formats from the clipboard. Another place you will see drag and drop fail is dropping text or graphics onto the desktop. The desktop requires that the dropped object be a file (like a Word or WordPerfect document), since we do not supply a file to the desktop, the drop does nothing.

In the future, work on our part and on the applications vendors parts will increase the number of places that can be successfully dropped on.

### **Lockup when using Send if Exchange not installed**

Generally, if Exchange is not installed, the File/Send menu item will not be available. However it is possible to get your system into a state where Exchange is not installed but your programs (including Quick View Plus) think that it is. Using the File/Send menu item when in this state will lock up the program. This is a Windows 95/Exchange problem which will hopefully be fixed in a maintenance release of Windows 95.

#### ➤ Supported File Formats

| <b>Document formats</b>        |                              |
|--------------------------------|------------------------------|
| Ami / Ami Professional         | Versions through 3.1         |
| DEC WPS Plus (DX)              | Versions through 4.1         |
| DisplayWrite 2 & 3 (TXT)       | All versions                 |
| DisplayWrite 4 & 5             | Versions through Release 2.0 |
| Enable                         | Versions 3.0, 4.0 and 4.5    |
| First Choice                   | Versions through 3.0         |
| Framework                      | Version 3.0                  |
| HTML (Internet World Wide Web) | Versions through 3.0         |

|   |                                 |
|---|---------------------------------|
| IBM FFT                                     | All versions                    |
| IBM Revisable Form Text                     | All versions                    |
| IBM Writing Assistant                       | Version 1.01                    |
| JustWrite                                   | Versions through 3.0            |
| Legacy                                      | Versions through 1.1            |
| MacWrite II                                 | Version 1.1                     |
| Manuscript                                  | Version 2.0                     |
| MASS11                                      | Versions through 8.0            |
| Microsoft Rich Text Format                  | Versions through 2.0            |
| Microsoft Windows Write                     | Versions through 3.0            |
| Microsoft Word for DOS                      | Versions through 6.0            |
| Microsoft Word for Macintosh                | Versions 4.0 through 6.0        |
| Microsoft Word for Windows                  | Versions through 7.0            |
| Microsoft Works for DOS                     | Versions through 2.0            |
| Microsoft Works for Macintosh               | Versions through 2.0            |
| Microsoft Works for Windows                 | Versions through 4.0            |
| MultiMate                                   | Versions through 4.0            |
| Navy DIF                                    | All versions                    |
| Nota Bene                                   | Version 3.0                     |
| Office Writer                               | Version 4.0 to 6.0              |
| PC-File Letter                              | Versions through 5.0            |
| PC-File+ Letter                             | Versions through 3.0            |
| PFS:Write                                   | Versions A, B, and C            |
| Plain Text (including ASCII, ANSI, Unicode) | n/a                             |
| Plain Text with UUEncoded objects           | n/a                             |
| Professional Write                          | Versions through 2.1            |
| Professional Write Plus                     | Version 1.0                     |
| Q&A   | Version 2.0                     |
| Q&A Write for Windows                       | Version 3.0                     |
| Samna Word                                  | Versions through Samna Word IV+ |
| SmartWare II                                | Version 1.02                    |
| Sprint                                      | Versions through 1.0            |
| Total Word                                  | Version 1.2                     |
| Volkswriter 3 & 4                           | Versions through 1.0            |
| Wang PC (IWP)                               | Versions through 2.6            |
| WordMARC                                    | Versions through Composer Plus  |
| WordPerfect                                 | Versions through 6.1            |
| WordPerfect for Macintosh                   | Versions 1.02 through 3.0       |
| WordPerfect for Windows                     | Versions through 6.1            |
| WordStar                                    | Versions through 7.0            |

|                                      |                           |
|--------------------------------------|---------------------------|
| WordStar 2000                        | Versions through 3.0      |
| WordStar for Windows                 | Version 1.0               |
| XyWrite                              | Versions through III Plus |
| <b>Spreadsheet formats</b>           |                           |
| Enable                               | Versions 3.0, 4.0 and 4.5 |
| First Choice                         | Versions through 3.0      |
| Framework                            | Version 3.0               |
| Lotus 1-2-3 Charts for DOS & Windows | Versions through 5.0      |
| Lotus 1-2-3 Charts for OS/2          | Versions through 2.0      |
| Lotus 1-2-3 for DOS & Windows        | Versions through 5.0      |
| Lotus 1-2-3 for OS/2                 | Versions through 2.0      |
| Lotus Symphony                       | Versions 1.0,1.1 and 2.0  |
| Microsoft Excel Charts               | Versions 3.0 - 7.0        |
| Microsoft Excel for Macintosh        | Versions 3.0 - 4.0        |
| Microsoft Excel for Windows          | Versions 2.2 through 7.0  |
| Microsoft Multiplan                  | Version 4.0               |
| Microsoft Works for DOS              | Versions through 2.0      |
| Microsoft Works for Macintosh        | Versions through 2.0      |
| Microsoft Works for Windows          | Versions through 4.0      |
| Mosaic Twin                          | Version 2.5               |
| PFS:Professional Plan                | Version 1.0               |
| QuattroPro for DOS                   | Versions through 5.0      |
| QuattroPro for Windows               | Versions through 6.0      |
| SmartWare II                         | Version 1.02              |
| SuperCalc 5                          | Version 4.0               |
| VP Planner 3D                        | Version 1.0               |
| <b>Database formats</b>              |                           |
| Access                               | Versions through 2.0      |
| DataEase                             | Version 4.0               |
| dBASE                                | Versions through 5.0      |
| dBXL                                 | Version 1.3               |
| Enable                               | Versions 3.0, 4.0 and 4.5 |
| First Choice                         | Versions through 3.0      |
| FoxBase                              | Version 2.1               |
| Framework                            | Version 3.0               |
| Microsoft Works for DOS              | Versions through 2.0      |
| Microsoft Works for Macintosh        | Versions through 2.0      |
| Microsoft Works for Windows          | Versions through 4.0      |
| Paradox for DOS                      | Versions through 4.0      |
| Paradox for Windows                  | Versions through 1.0      |
| Personal R:BASE                      | Version 1.0               |

|  |                          |
|--|--------------------------|
| Q & A                                      | Versions through 2.0     |
| R:BASE                                     | Versions through 3.1     |
| R:BASE System V                            | Version 1.0              |
| Reflex                                     | Version 2.0              |
| SmartWare II                               | Version 1.02             |
| <b>Graphic formats</b>                     |                          |
| Ami Draw (SDW)                             | n/a                      |
| AutoCAD DXF (Binary and ASCII)             | Versions 12 and 13       |
| Binary Group 3 Fax                         | All versions             |
| CompuServe GIF                             | All versions             |
| Computer Graphics Metafile                 | n/a                      |
| Corel Draw (TIFF header only)              | Versions 2.0 through 5.0 |
| DCX (multi-page PCX)                       | n/a                      |
| Encapsulated PostScript (TIFF header only) | n/a                      |
| GEM Paint (IMG)                            | n/a                      |
| HPGL Hewlett Packard Graphics Language     | Version 2                |
| JPEG                                       | All versions             |
| Lotus PIC                                  | n/a                      |
| Lotus Snapshot                             | All versions             |
| Macintosh PICT1 & PICT2 (Bitmap only)      | n/a                      |
| MacPaint                                   | n/a                      |
| Micrografx Designer and Draw (DRW)         | Versions through 4.0     |
| OS/2 Bitmap                                | All versions             |
| PCX (Paintbrush)                           | All versions             |
| TIFF                                       | Versions through 6       |
| TIFF CCITT Group 3 & 4                     | Verisons through 6       |
| Truevision TGA (TARGA)                     | Version 2.0              |
| Windows Bitmap                             | All versions             |
| Windows Cursor                             | All versions             |
| Windows Icon                               | All verisons             |
| Windows Metafile                           | Versions through 3.1     |
| WordPerfect Graphics [WPG and WPG2]        | Versions through 2.0     |
| <b>Presentation formats</b>                |                          |
| Freelance for OS/2                         | Versions through 2.0     |
| Freelance for Windows                      | Version 2.0              |
| Harvard Graphics for DOS                   | Versions 2.x & 3.x       |
| Microsoft PowerPoint for Macintosh         | Version 4.0              |
| Microsoft PowerPoint for Windows           | Versions through 7.0     |
| <b>Compressed and collection formats</b>   |                          |
| Microsoft Binder                           | Version 7.0              |
| Unix Compress                              | n/a                      |

|                          |                               |
|--------------------------|-------------------------------|
| Unix TAR                 | n/a                           |
| ZIP                      | PKWARE versions through 2.04g |
| <b>Other formats</b>     |                               |
| DOS EXE                  | All versions                  |
| Windows 16bit EXE or DLL | All versions                  |
| Windows 32bit EXE or DLL | All versions                  |